



Pinjetsin syyskisa

Oil Per Board: 40 uL Oil Pattern Distance: 42 Feet Volume Oil Total: 18.32 mL Total Boards Crossed: 458 Boards
 Forward Oil Total: 8.52 mL Reverse Oil Total: 9.8 mL
 Forward Boards Crossed: 213 Boards Reverse Boards Crossed: 245 Boards

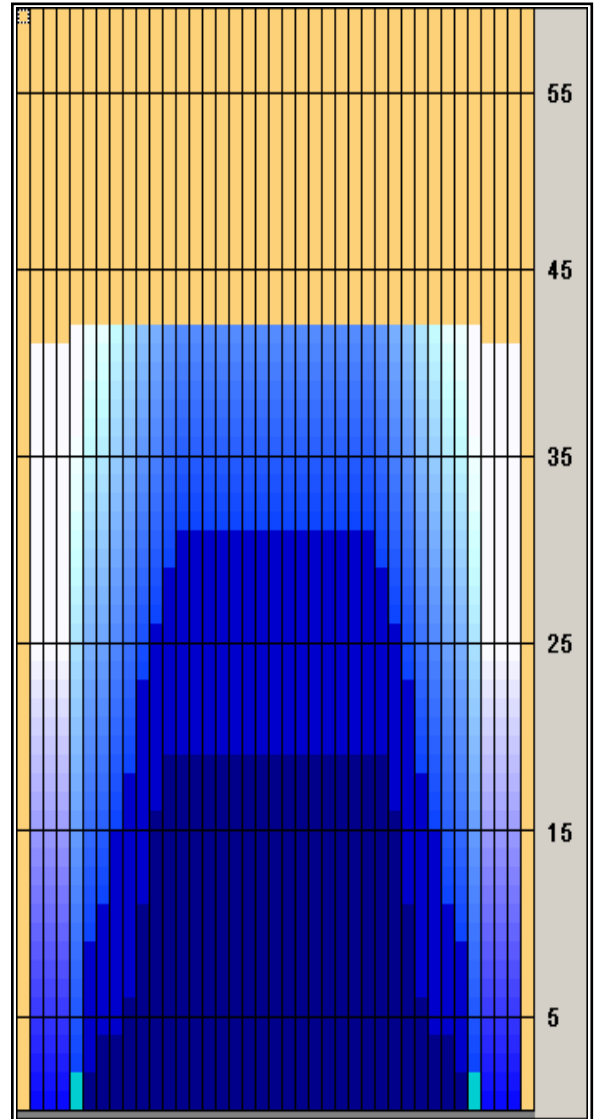
	Start	Stop	Loads	Speed	Crossed	Start	End	Feet	T.Oil
1	3L	3R	1	14	35	0.0	0.0	0.0	1,400
2	5L	5R	1	14	31	0.0	1.9	1.9	1,240
3	7L	7R	1	14	27	1.9	3.8	1.9	1,080
4	9L	9R	1	14	23	3.8	5.7	1.9	920
5	10L	10R	2	18	42	5.7	10.8	5.1	1,680
6	11L	11R	2	18	38	10.8	15.9	5.1	1,520
7	12L	12R	1	22	17	15.9	19.0	3.1	680
8	2L	2R	0	22	0	19.0	30.0	11.0	0
9	2L	2R	0	26	0	30.0	42.0	12.0	0

Navigation: Forward / Reverse / More Info

	Start	Stop	Loads	Speed	Crossed	Start	End	Feet	T.Oil
1	2L	2R	0	30	0	42.0	30.0	-12.0	0
2	13L	13R	1	18	15	30.0	27.5	-2.5	600
3	12L	12R	1	18	17	27.5	25.0	-2.5	680
4	11L	11R	1	18	19	25.0	22.5	-2.5	760
5	10L	10R	2	18	42	22.5	17.4	-5.1	1,680
6	9L	9R	2	14	46	17.4	13.5	-3.9	1,840
7	8L	8R	2	14	50	13.5	9.6	-3.9	2,000
8	7L	7R	1	14	27	9.6	7.7	-1.9	1,080
9	6L	6R	1	14	29	7.7	5.8	-1.9	1,160
10	2L	2R	0	14	0	5.8	0.0	-5.8	0

Navigation: Forward / Reverse / More Info

Forward Oil
 Reverse Oil
 Combined Oil
 Buff Area



Arrow Zone Ratios

Item	2-5L:16L-20	6-10L:16:-20	11-15L:16L-20	16L-20:20-16R	16L-20:20-16R	20-16R:15-11R	20-16R:10-6R	20-16R:5-2R
ul Arrow	40	312	768	800	800	768	312	40
Zone Ratio	20	2.56	1.04	1	1	1.04	2.56	20

Track Zone Ratios

Item	3L-7L:18L-18R	8L-12L:18L-18R	13L-17L:18L-18R	18L-18R:17R-13R	18L-18R:12R-8R	18L-18R:7R-3R
Description	Outside Track:Middle	Middle Track:Middle	Inside Track:Middle	Middle: Inside Track	Middle:Middle Track	Middle:Outside Track
Track Zone Ratio	8.33	1.49	1	1	1.49	8.33

