

Bermuda Bowling Team Open 2018



Oil Per Board: 40 uL Oil Pattern Distance: 42 Feet Volume Oil Total: 18.96 mL Total Boards Crossed: 474 Boards
 Forward Oil Total: 8.8 mL Reverse Oil Total: 10.16 mL
 Forward Boards Crossed: 220 Boards Reverse Boards Crossed: 254 Boards

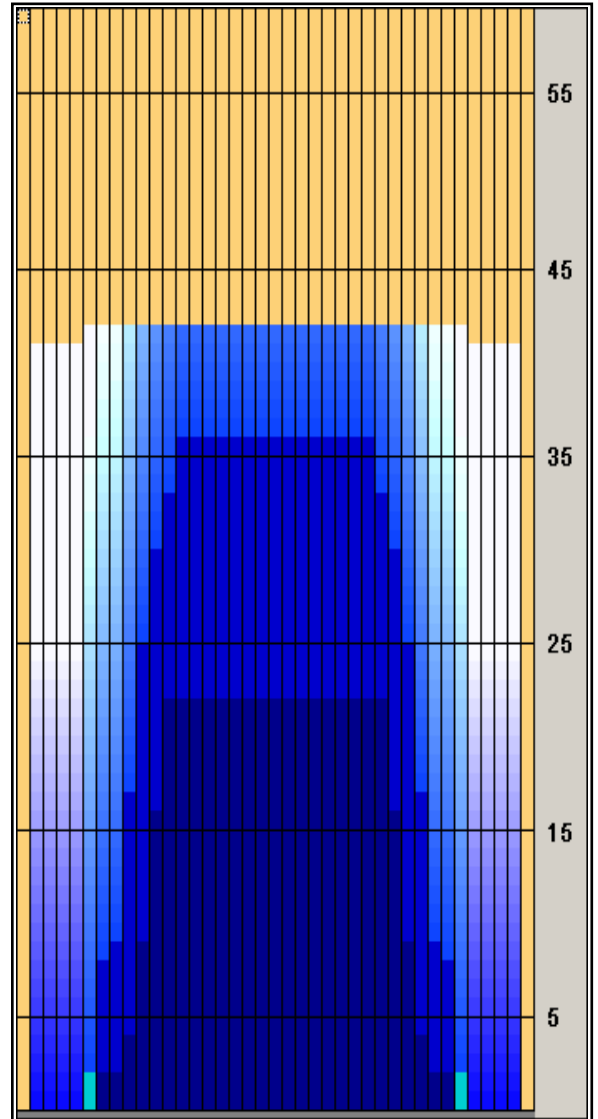
	Start	Stop	Loads	Speed	Crossed	Start	End	Feet	T.Oil
1	3L	3R	1	10	35	0.0	0.0	0.0	1,400
2	6L	6R	1	14	29	0.0	1.9	1.9	1160
3	9L	9R	1	14	23	1.9	3.8	1.9	920
4	10L	10R	2	18	42	3.8	8.9	5.1	1680
5	11L	11R	3	18	57	8.9	16.5	7.6	2280
6	12L	12R	2	18	34	16.5	21.6	5.1	1360
7	2L	2R	0	22	0	21.6	32.0	10.4	0
8	2L	2R	0	26	0	32.0	42.0	10.0	0

Navigation: Forward / Reverse / More Info

	Start	Stop	Loads	Speed	Crossed	Start	End	Feet	T.Oil
1	2L	2R	0	30	0	42.0	35.0	-7.0	0
2	13L	13R	1	22	15	35.0	31.9	-3.1	600
3	12L	12R	1	22	17	31.9	28.8	-3.1	680
4	11L	11R	2	18	38	28.8	23.7	-5.1	1520
5	10L	10R	3	18	63	23.7	16.1	-7.6	2520
6	9L	9R	3	18	69	16.1	8.5	-7.6	2760
7	8L	8R	1	14	25	8.5	6.6	-1.9	1000
8	7L	7R	1	14	27	6.6	4.7	-1.9	1080
9	2L	2R	0	14	0	4.7	0.0	-4.7	0

Navigation: Forward / Reverse / More Info

Forward Oil
 Reverse Oil
 Combined Oil
 Buff Area



Arrow Zone Ratios

Item	2-5L:16L-20	6-10L:16:-20	11-15L:16L-20	16L-20:20-16R	16L-20:20-16R	20-16R:15-11R	20-16R:10-6R	20-16R:5-2R
ul Arrow	30	240	840	880	880	840	240	30
Zone Ratio	29.33	3.67	1.05	1	1	1.05	3.67	29.33

Track Zone Ratios

Item	3L-7L:18L-18R	8L-12L:18L-18R	13L-17L:18L-18R	18L-18R:17R-13R	18L-18R:12R-8R	18L-18R:7R-3R
Description	Outside Track:Middle	Middle Track:Middle	Inside Track:Middle	Middle: Inside Track	Middle:Middle Track	Middle:Outside Track
Track Zone Ratio	13.75	1.72	1	1	1.72	13.75

