



Jassien Syyskisa 2016

Oil Per Board: 40 uL Oil Pattern Distance: 41 Feet Volume Oil Total: 20.88 mL Total Boards Crossed: 522 Boards

Forward Oil Total: 11.6 mL Reverse Oil Total: 9.28 mL

Forward Boards Crossed: 290 Boards Reverse Boards Crossed: 232 Boards

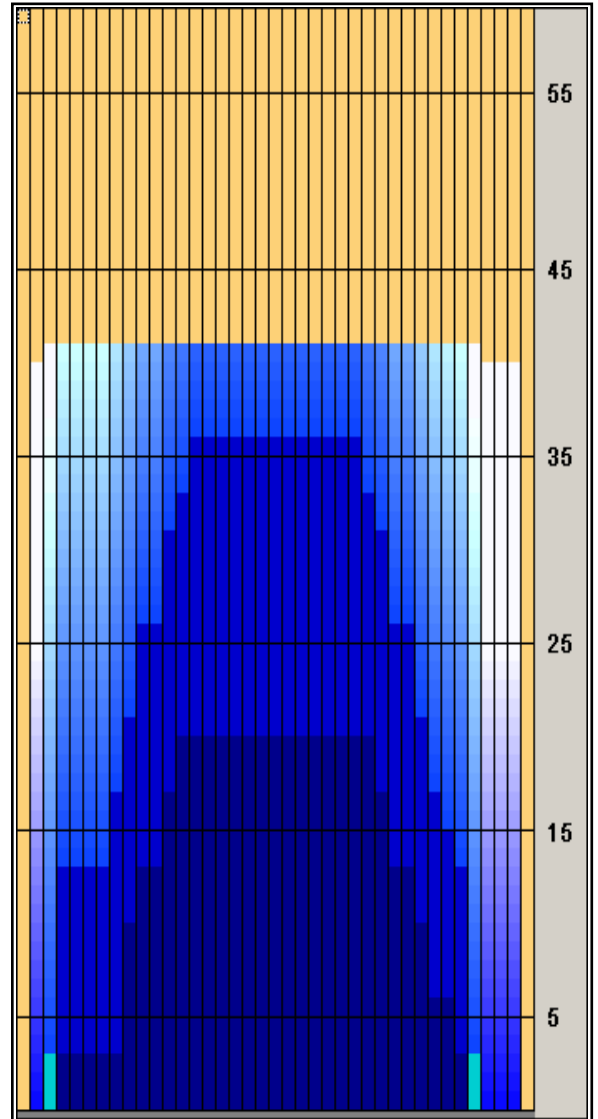
	Start	Stop	Loads	Speed	Crossed	Start	End	Feet	T.Oil
1	2L	2R	1	10	37	0.0	0.0	0.0	1,480
2	3L	5R	2	10	66	0.0	2.8	2.8	2640
3	9L	7R	2	10	50	2.8	5.6	2.8	2000
4	9L	9R	2	14	46	5.6	9.5	3.9	1840
5	10L	10R	2	14	42	9.5	13.4	3.9	1680
6	12L	12R	2	14	34	13.4	17.3	3.9	1360
7	13L	13R	1	18	15	17.3	19.8	2.5	600
8	2L	2R	0	18	0	19.8	30.0	10.2	0
9	2L	2R	0	22	0	30.0	35.0	5.0	0
10	2L	2R	0	26	0	35.0	41.0	6.0	0

Navigation: Forward / Reverse / More Info

	Start	Stop	Loads	Speed	Crossed	Start	End	Feet	T.Oil
1	2L	2R	0	30	0	41.0	35.0	-6.0	0
2	14L	14R	1	18	13	35.0	32.5	-2.5	520
3	13L	13R	1	18	15	32.5	30.0	-2.5	600
4	12L	12R	2	18	34	30.0	24.9	-5.1	1360
5	10L	10R	2	18	42	24.9	19.8	-5.1	1680
6	9L	9R	2	14	46	19.8	15.9	-3.9	1840
7	8L	8R	1	14	25	15.9	14.0	-1.9	1000
8	8L	7R	1	14	26	14.0	12.1	-1.9	1040
9	4L	6R	1	14	31	12.1	10.2	-1.9	1240
10	2L	2R	0	14	0	10.2	0.0	-10.2	0

Navigation: Forward / Reverse / More Info

Forward Oil
Reverse Oil
Combined Oil
Buff Area



Arrow Zone Ratios

Item	2-5L:16L-20	6-10L:16:-20	11-15L:16L-20	16L-20:20-16R	16L-20:20-16R	20-16R:15-11R	20-16R:10-6R	20-16R:5-2R
ul Arrow	120	336	832	920	920	832	376	60
Zone Ratio	7.67	2.74	1.11	1	1	1.11	2.45	15.33

Track Zone Ratios

Item	3L-7L:18L-18R	8L-12L:18L-18R	13L-17L:18L-18R	18L-18R:17R-13R	18L-18R:12R-8R	18L-18R:7R-3R
Description	Outside Track:Middle	Middle Track:Middle	Inside Track:Middle	Middle: Inside Track	Middle:Middle Track	Middle:Outside Track
Track Zone Ratio	6.05	1.64	1.01	1.01	1.6	7.19

