



Bermuda BT

Oil Per Board: 40 uL Oil Pattern Distance: 40 Feet Volume Oil Total: 18 mL Total Boards Crossed: 450 Boards
 Forward Oil Total: 9.48 mL Reverse Oil Total: 8.52 mL
 Forward Boards Crossed: 237 Boards Reverse Boards Crossed: 213 Boards

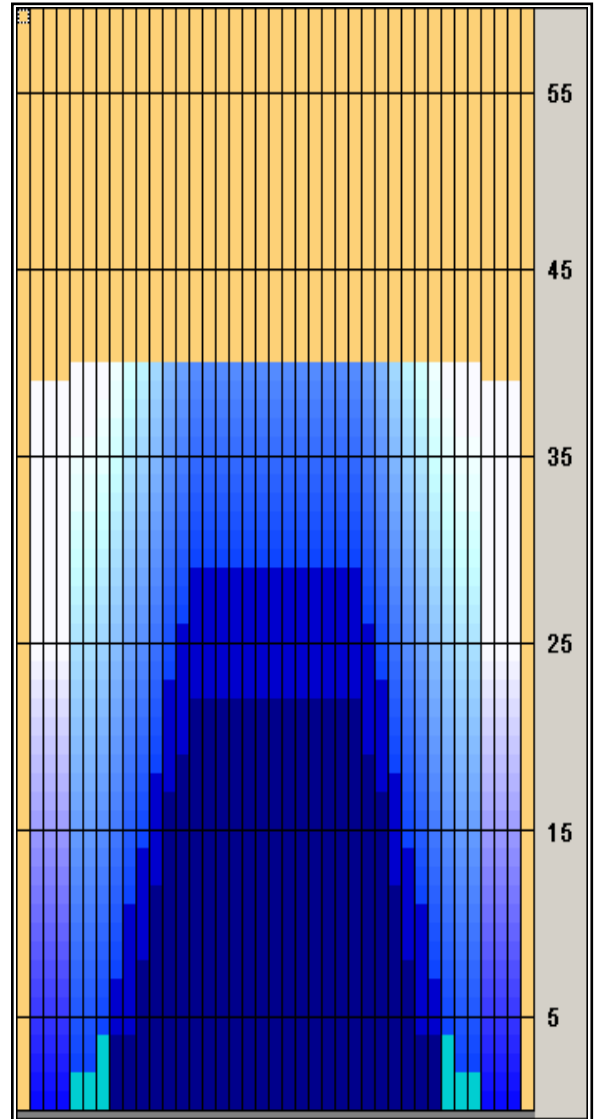
	Start	Stop	Loads	Speed	Crossed	Start	End	Feet	T.Oil
1	2L	2R	1	10	37	0.0	0.0	0.0	1,480
2	5L	5R	1	14	31	0.0	1.9	1.9	1,240
3	7L	7R	1	14	27	1.9	3.8	1.9	1,080
4	10L	10R	2	14	42	3.8	7.7	3.9	1,680
5	11L	11R	2	14	38	7.7	11.6	3.9	1,520
6	12L	12R	2	18	34	11.6	16.7	5.1	1,360
7	13L	13R	1	18	15	16.7	19.2	2.5	600
8	14L	14R	1	18	13	19.2	21.7	2.5	520
9	2L	2R	0	22	0	21.7	30.0	8.3	0
10	2L	2R	0	26	0	30.0	40.0	10.0	0

Navigation: Forward / Reverse / More Info

	Start	Stop	Loads	Speed	Crossed	Start	End	Feet	T.Oil
1	2L	2R	0	30	0	40.0	28.0	-12.0	0
2	14L	14R	1	22	13	28.0	24.9	-3.1	520
3	13L	13R	1	18	15	24.9	22.4	-2.5	600
4	12L	12R	2	18	34	22.4	17.3	-5.1	1,360
5	11L	11R	2	14	38	17.3	13.4	-3.9	1,520
6	10L	10R	2	14	42	13.4	9.5	-3.9	1,680
7	9L	9R	2	14	46	9.5	5.6	-3.9	1,840
8	8L	8R	1	14	25	5.6	3.7	-1.9	1,000
9	2L	2R	0	14	0	3.7	0.0	-3.7	0

Navigation: Forward / Reverse / More Info

Forward Oil
 Reverse Oil
 Combined Oil
 Buff Area



Arrow Zone Ratios

Item	2-5L:16L-20	6-10L:16:-20	11-15L:16L-20	16L-20:20-16R	16L-20:20-16R	20-16R:15-11R	20-16R:10-6R	20-16R:5-2R
ul Arrow	50	200	768	880	880	768	200	50
Zone Ratio	17.6	4.4	1.15	1	1	1.15	4.4	17.6

Track Zone Ratios

Item	3L-7L:18L-18R	8L-12L:18L-18R	13L-17L:18L-18R	18L-18R:17R-13R	18L-18R:12R-8R	18L-18R:7R-3R
Description	Outside Track:Middle	Middle Track:Middle	Inside Track:Middle	Middle: Inside Track	Middle:Middle Track	Middle:Outside Track
Track Zone Ratio	12.22	2.12	1.02	1.02	2.12	12.22

